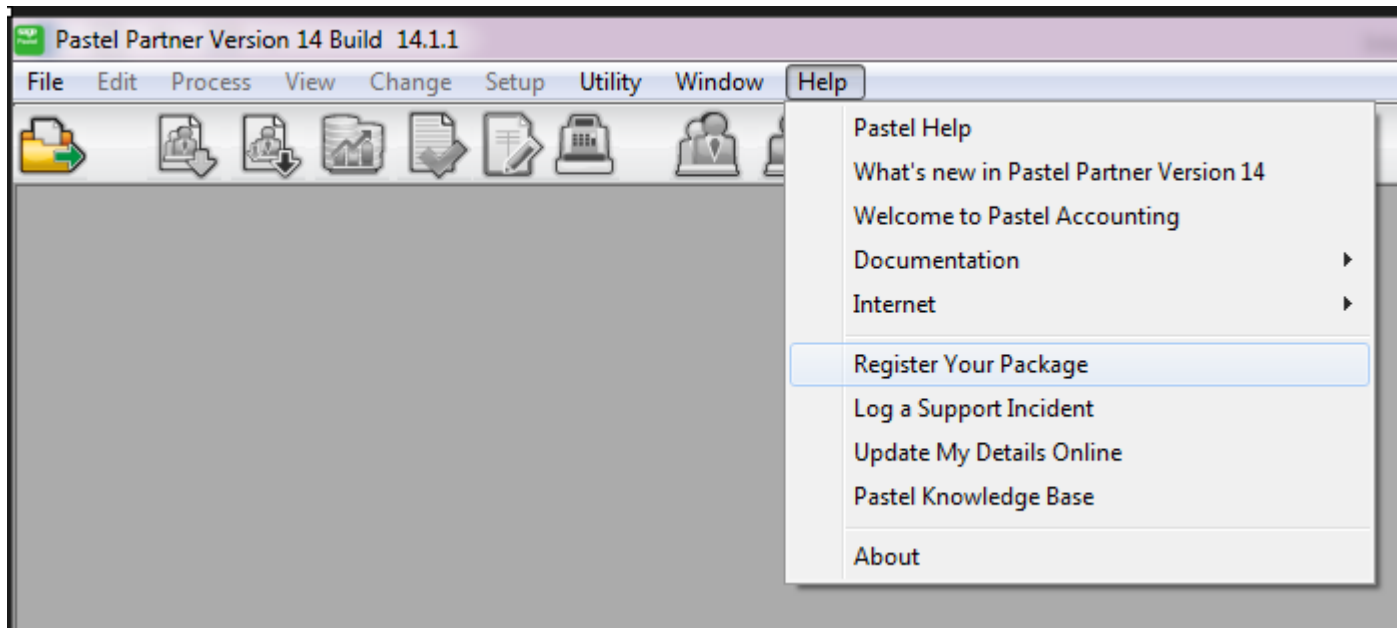


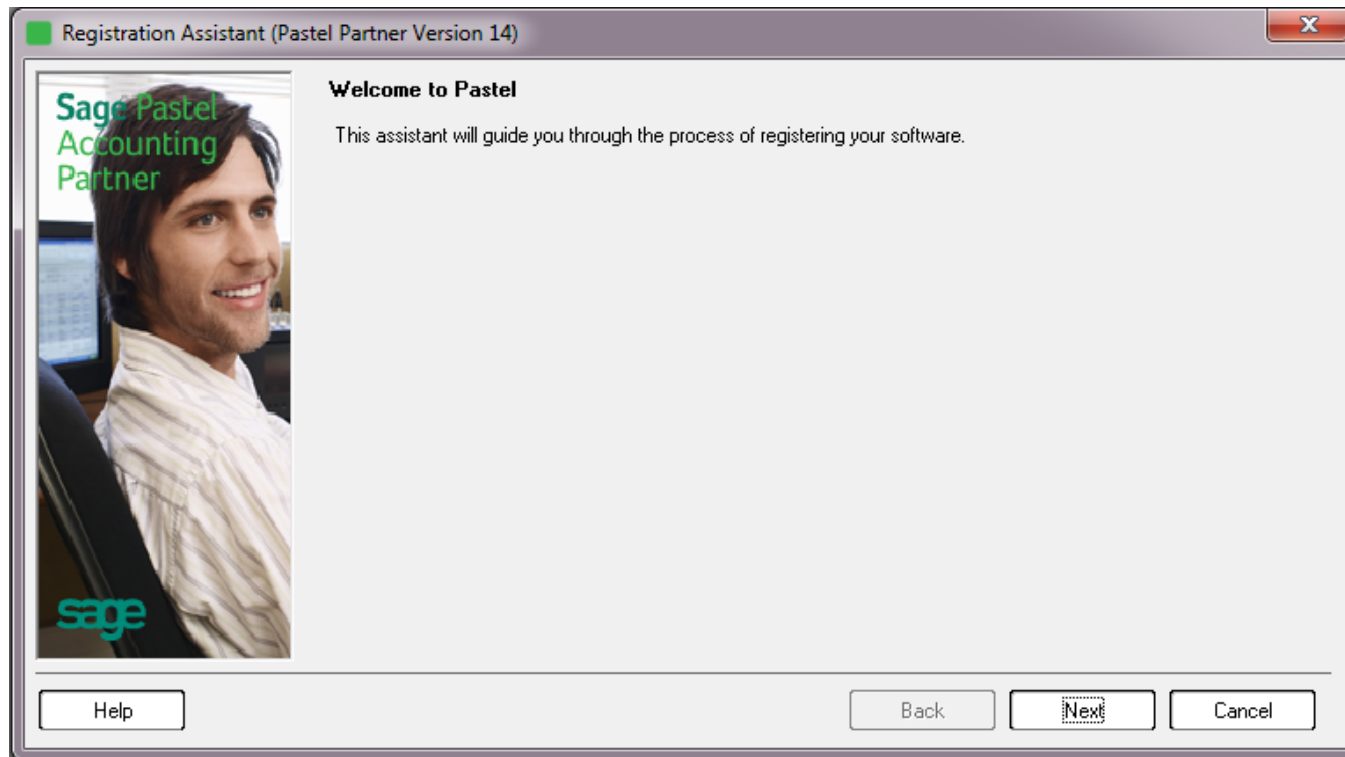
How do I register my package?

Pastel Partner or Xpress Registration

- Open your Pastel software and navigate to Help | Register Your Package.



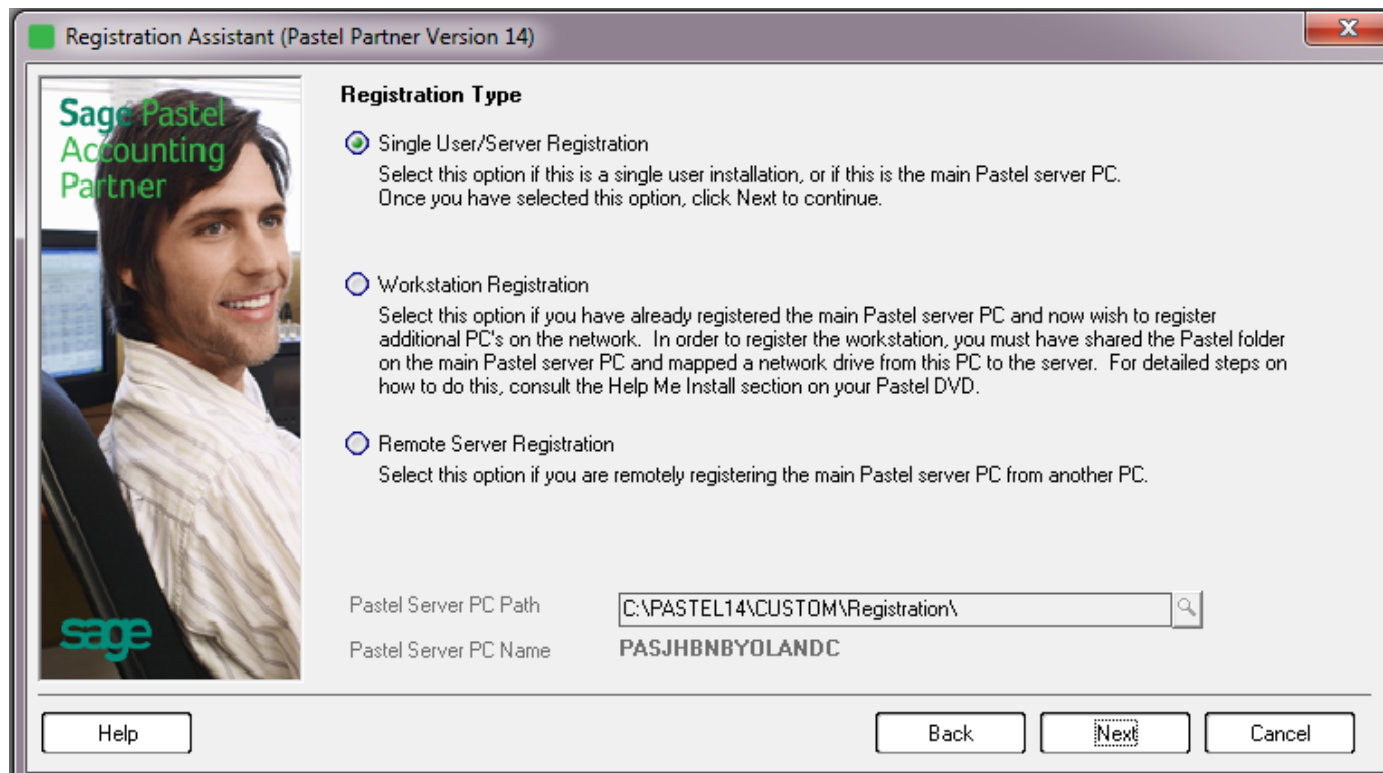
- The Registration Assistant will guide you through the process.
- Once the Welcome screen appears, click on [Next](#)



There are three types of registrations available in Sage Pastel Partner/Express?

- *Single User/Server Registration*
 - Select this option if this is a **single user installation**, or if this is the main Pastel server PC
- *Workstation registration*
 - Select this option if you have already registered the main Pastel server PC and now which to register additional PC's on the network.

- In order to register the workstation, you must have shared the Pastel folder on the main Pastel server PC and mapped the network drive from the PC to the server. For Detailed steps on how to do this, please consult the **Help Me Install** section on your Pastel DVD or alternatively, click here. (Link to mapping work station)
- **Remote server registration**
 - Select this option if you are remotely registering the main Pastel server PC from another Machine
- Once you have selected the appropriate registration type click **Next**.



- The next screen will give you the option to **Register Online**. If you have an **active internet connection** leave this option **ticked** if you wish to **register online**. This is the **easiest method** of registering your software. Enter the information required below and you will be taken to the online registration wizard.
 - **Serial Number**
 - **Registered Name**.
 - The **country will automatically** be selected, based on your Serial Number.
- **Untick** this option should you wish to **register manually** you can do so by contacting the Client Services telephonically or via e-mail
 - **Telephone** : 011 304 3300 or alternatively
 - **E-mail** : ClientServices@Sage.com
- Once entered click **Next**.
 - If you choose to register online you will **automatically be directed** to the Pastel online Registrations Wizard

Registration Assistant (Pastel Partner Version 14)

Registration Details

Please enter your company's registered name and base serial number. The Base Serial Number can be found on your Invoice, the back of the DVD cover or on the bottom of the Pastel box.

Registering Online: If you have an internet connection, you can register online. This is the easiest method of registering your software. Enter the information required below and you will be taken to an online registration screen. Upon completion, your registration code will be entered into your Pastel product automatically.

Register Online

The Registrations Team can be contacted on +27 11 304 3300 or registrations@pastel.co.za.

To register the program as a demo version, select Demonstration. A demonstration version is valid for 30 days.

Educational Pack
 Demonstration

Base Serial Number:

Registered Name:

Select your country:

Buttons: Help, Back, Next, Cancel

- Follow the prompts and complete the registration process.

Web Registration

Re-register your product [Help](#)

Thank you for choosing to register online.
Once you click on the "Complete Re-Registration " Button, a new registration code will be displayed.
Once you close and re-open the application your software will automatically be registered.
Should you require further assistance please contact Client services on 011 304 3900 or alternatively e-mail clientservices@sage.com.

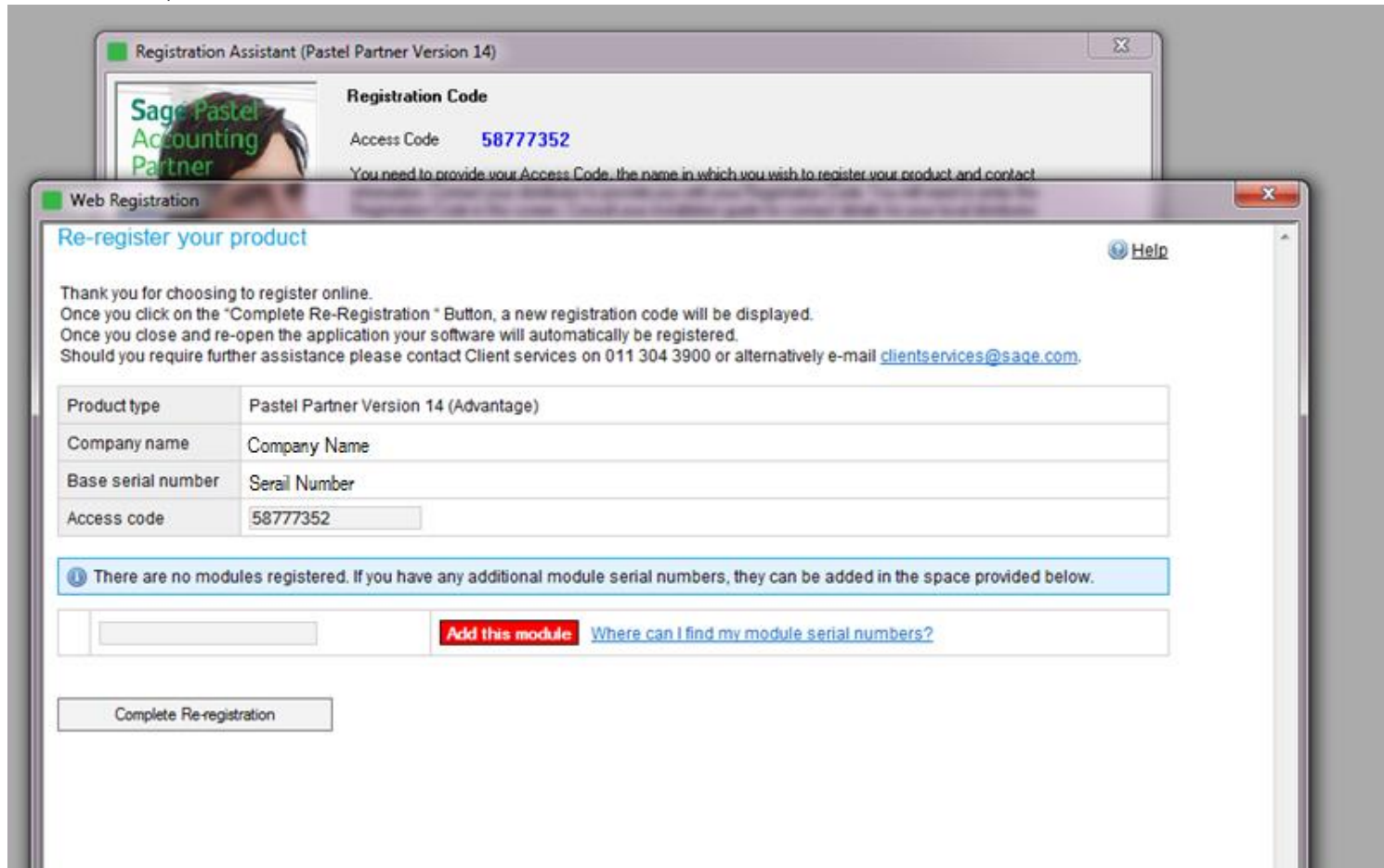
Product type	Pastel Partner Version 14 (Advantage)
Company name	Company Name
Base serial number	Serial Number
Access code	58777352

i There are no modules registered. If you have any additional module serial numbers, they can be added in the space provided below.

Add this module [Where can I find my module serial numbers?](#)

- Should you wish to add additional Modules, you may do so by selecting the Add This Module option. Enter the module serial number

- Before completing the registration, ensure that the access code appearing on the online wizard matches the access code appearing in your Pastel product.

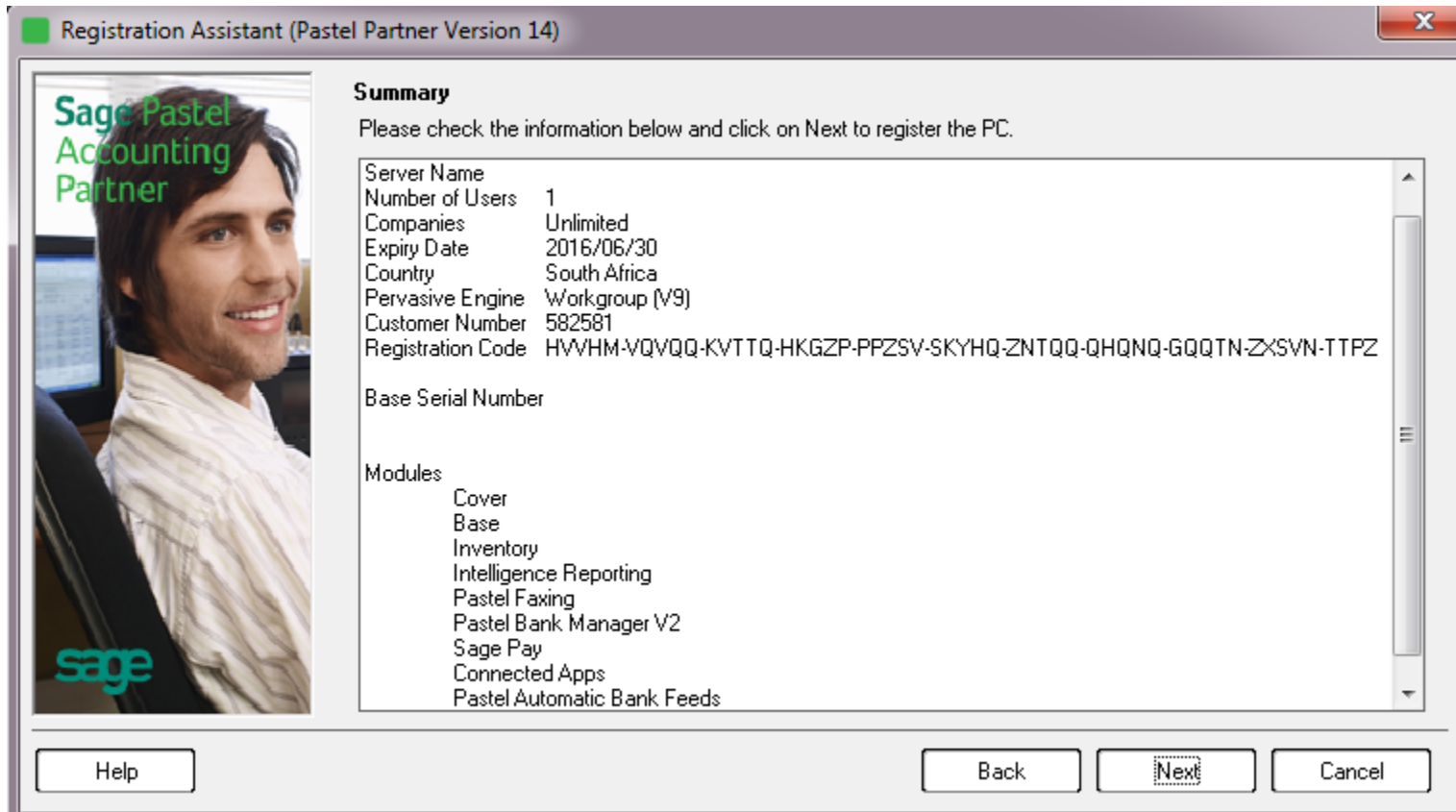


- When you click on [Complete registration](#), your access code and registration code will automatically be inserted in your package.

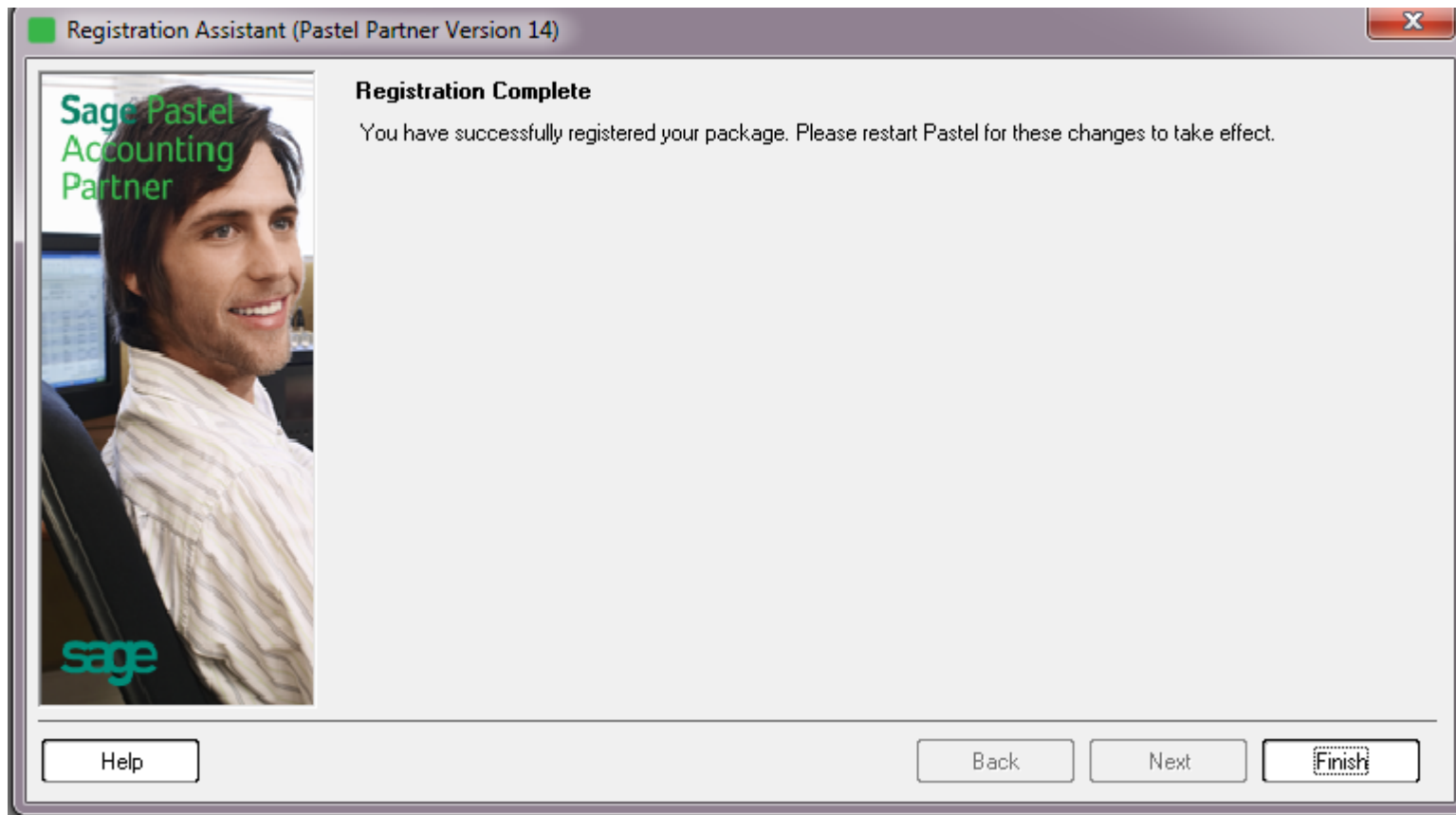


- Click [Next](#)

- Your Pastel Accounting package should now be registered. This can be confirmed by navigating to **Help | About**.



- Select the **Finish** option in order to complete the Registration.



Should you experience problems with your registration process online, please contact Pastel Registrations for assistance on



+27 11 304 3300



Clientservices@Sage.com
